



## 2017+ Maverick X3 Nerf Bars # S3127



### INSTALLATION INSTRUCTIONS

# Maverick X3 – Nerf Bars



## 2017+ Maverick X3 Nerf Bars # S3127

### PARTS LIST

ITEM	PART #	DESCRIPTION	QTY
		Passenger Side Nerf Bar	1
		Driver Side Nerf Bar	1
		Curved Washers	12
		2.75" Grade 8 Bolts	6
		Finishing Plug	4

- 1.) Start by placing X3 on flat ground and be sure machine is in Park (P).
- 2.) Find small divots in side panel plastics that will notate where preset holes in the frame are. (See Image A)
- 3.) Find the mounting holes in the frame and familiarize yourself with where the bolts will go through. (Figure B & C)
- 4.) Use a "step bit" to drill through the plastics to allow nerf bar mounting point to go through. **\*\*Drill 1/4" higher than the divot itself. From what we have found by installing numerous sets in the shop, the plastics tend to sag which makes the holes in the frame higher than the divots\*\*. Holes need to be approximately 1". Maybe a little larger to account for frame variance but start with 1". (Figure D)**
- 5.) Place nerf bar against side of machine to make sure these holes line up with mounting points.
- 6.) Place supplied Grade 8 Bolt through supplied curved washer and through frame rail from inside to outside of frame. Place curved washer on opposite side of frame over the bolt.
- 7.) Start the bolts into the nerf bars by hand. Once these are started, use RED Loctite and tighten each of the 3 bolts till they are snug.
- 8.) Do the same process on the opposite side.
- 9.) Drive machine around for a few minutes and check all bolts to make sure everything is tight.



## 2017+ Maverick X3 Nerf Bars # S3127





# 2017+ Maverick X3 Nerf Bars # S3127

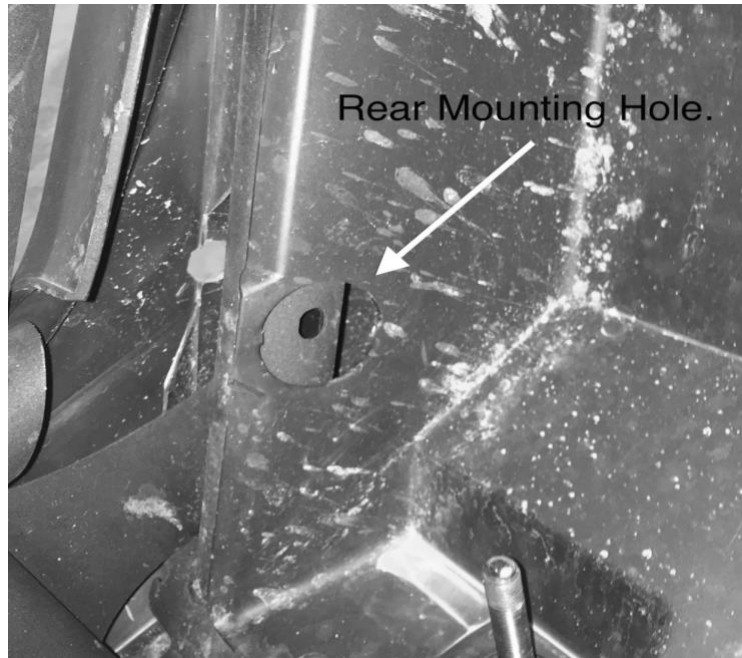


Figure B

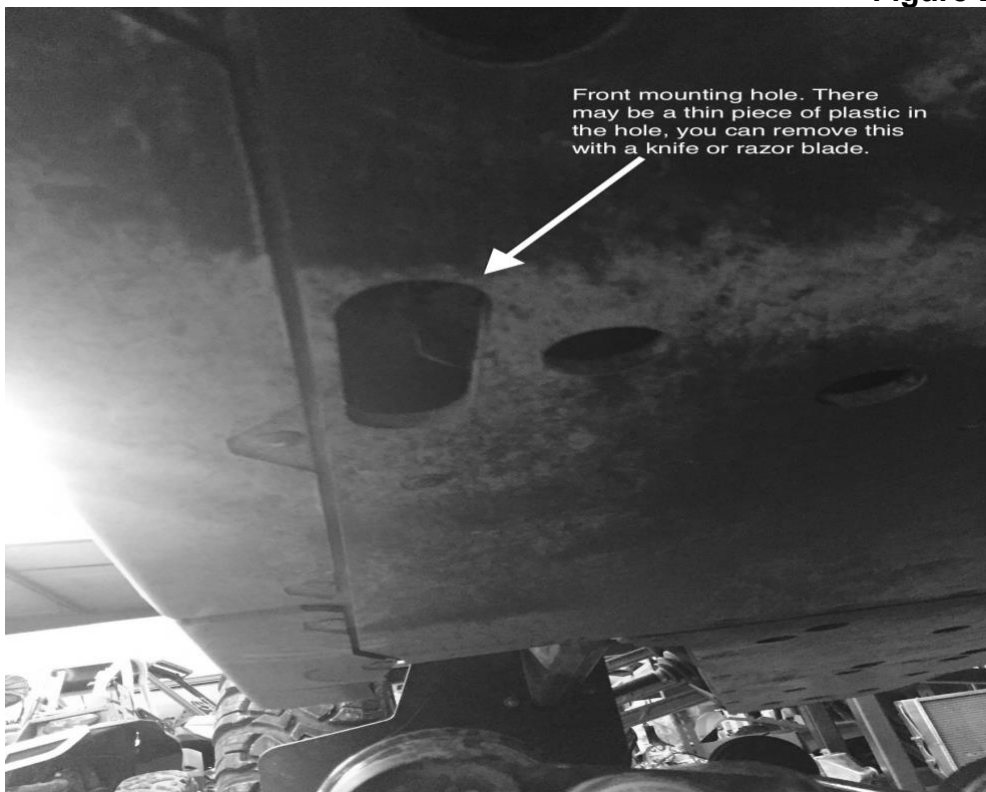


Figure C



# 2017+ Maverick X3 Nerf Bars # S3127

